



# CATALOG

PRODUCT SPRING 23





<b>HARBINGER</b>	
Gloves	7 - 19
Belts	20 - 27
Grips Assistance Wrist & Knee Support	28 - 36
Training Accessories	37 - 38
Home Fitness	39 - 40
While Stock Last	41 - 47

**BRAND SUPPORT**

Campaign	48 - 49
Digital	50
Retail Looks	51 - 52
Social Connection & Press	52

Our mission is to elevate strength training. With more than 30 years of experience in this field, Harbinger leads the strength training category in gloves, belts and accessories. Strategic design and high-quality materials make Harbinger the trusted strength training brand of choice for all performance levels.

# OVER 30 YEARS OF EXPERIENCE

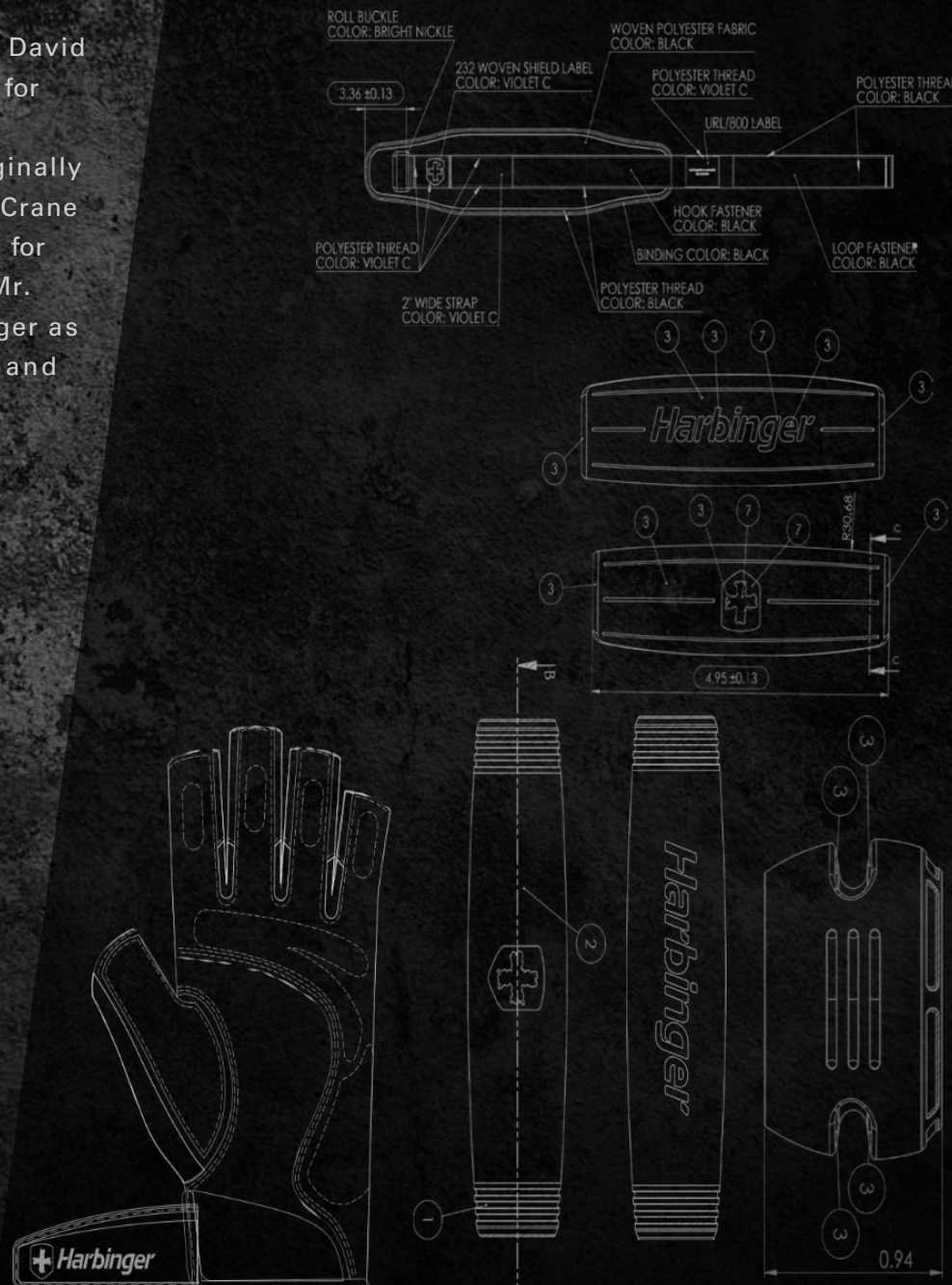
Founded in 1988 by fitness enthusiast and entrepreneur David McCrane, Harbinger swiftly became the brand of choice for weight lifters worldwide.

It began with an innovative Wrist-Stabilizing Glove. Originally intended to mitigate wrist injuries for skateboarders, McCrane quickly realized the benefit of the Wrist-Stabilizing glove for the strength training industry. Teaming up with 8-time Mr. Olympia bodybuilder Lee Haney, they pioneered Harbinger as the source for high quality, carefully engineered gloves and belts.

Since then, Harbinger has expanded into strength training accessories, including wraps, straps and bar grips. With proprietary technology and advanced design, Harbinger drives the category and continues to deliver new, innovative products.

In 2013, Harbinger introduced functional fitness products, including weight vests and speed ropes, designed to enhance fast-paced workouts.

Today, Harbinger Fitness is part of Implus LLC organization which has more than 30 years of experience. The Implus Fitness & Wellness Division manages category-leading brands renowned for superior quality, innovative design and heritage. Implus proudly distributes in over 75,000 retail outlets across North America and in over 70 countries worldwide. Implus' scale and reach helps make Harbinger products broadly available across the United States and internationally.



## 1988

Harbinger founded with Wrist-Stabilizing glove as first product

## 1990

First belt launched, the Lee Haney Kevlar Weight Training Belt

## 1993

Millionth glove sold

## 1998

Patented Wash & Dry leather technology

## 2002

Women's line launched

## 2013

Introduced functional fitness products

## 2015

Acquired by Implus LLC

## NOW

New 2.0 gloves ranges



## FITNESS

Versatile, all-purpose gloves and accessories collection combines strength and cardio options for consumers with well-rounded general fitness goals. Fitness shoppers typically want to improve appearance, get in shape, and have more energy for daily life.



## LIFTING

Rugged and durable, the Lifting collection provides a broad range of best-selling gloves, belts, straps, wraps and training aids for weightlifting. Lifting shoppers typically have training goals of building strength and muscle size, and often strength train as their primary form of physical activity.



## HEAVY LIFTING

Our toughest and most supportive gloves, belts and accessories, the Heavy Lifting collection provides substantial support for serious training. Heavy Lifting shoppers typically have competitive training goals to set PRs, max out and advance in weight classes. Often, Heavy Lifting shoppers compete at the amateur or semi-pro level, and strongly identify with lifting weights as a lifestyle.





### GLOVE SIZE CHART

Measure the circumference of your flat hand just under the knuckles (not including your thumb). **Our gloves should fit tight.** The real leather is designed to stretch over the life of the glove. If you are in-between sizes, we recommend you select the larger of the two sizes. If you prefer a looser fitting glove, buy one size larger than you typically wear.

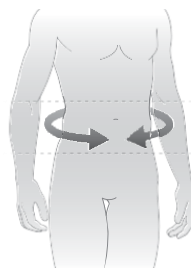


### HARBINGER GLOVES

	XS	S	M	L	XL	XXL
Unisex/ Mens	6.5" - 7" ~16.5cm - 17.8cm	7" - 7.5" ~17.8cm - 19cm	7.5" - 8" ~19cm - 20.3cm	8" - 8.5" ~20.3cm - 21.6cm	8.5" - 9.5" ~21.6cm - 24cm	9.5" + + 24cm
Womens (Old pro & power)	6" - 6.5" ~15.2cm - 16.5cm	6.5" - 7" ~16.5cm - 17.8cm	7" - 7.5" ~17.8cm - 19cm	7.5" - 8" ~19cm - 20.3cm	-	-

### BELT SIZE CHART

When purchasing a new strength training belt, it is important to measure yourself correctly. **Do not use your pant size to determine the size of your belt.** Use a tape measure around your waist, between your hips and ribs. Circle around the waist so you start and stop on belly button. **Our strength training belts are designed to be worn tight around one's waist.** The more secure the belt, the more support and stabilization it provides. If you prefer a looser fit, buy one size larger.

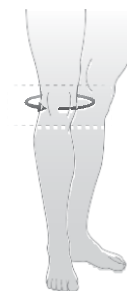


### HARBINGER BELTS

	XS	S	M	L	XL
Unisex/ Mens	-	25" - 29" (58cm - 71cm)	30" - 34" (71cm - 84cm)	34" - 38" (84cm - 97cm)	38" - 44" (97cm - 112cm)
Womens	24" - 28" (58cm - 71cm)	28" - 32" (71cm - 84cm)	32" - 36" (84cm - 97cm)	-	-

### KNEE SLEEVES SIZE CHART

Measure the circumference of your knee at the center of your patella (knee cap).



	S	M	L	XL
UNISEX	12" - 14" 30.5cm - 35.6cm	13" - 15" 33cm - 38cm	14" - 17" 33.5cm - 43.2cm	16"+ 40.6cm+

### LIFTING GRIPS SIZE CHART

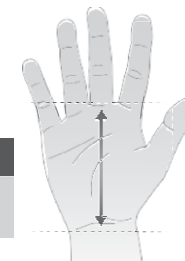
Measure the circumference of your flat hand just under the knuckles (not including your thumb).



	S/M	M/L	L/XL
UNISEX	7" - 8" 17.8cm - 20.3cm	7.5" - 8.5" 19cm - 21.6cm	8" - 9.5" 20.3cm - 24cm

### PALM GRIPS SIZE CHART

Measure the length of your palm from the bottom of your middle finger to your wrist.



	S	M	L	XL
UNISEX	3.25" - 4" 8.3cm - 10.1cm	4" - 4.75" 10.1cm - 12cm	4.75" - 5.5" 12cm - 14cm	5.5"+ 14cm+



**ANTIMICROBIAL**

Treatment used to control odor and prevent staining caused by natural and environmental bacteria

**APPEARS ON:** SHIELD PROTECT



**SPIDER GRIP**

Premium leather that undergoes a special tanning process to produce a tackier hand

**APPEARS ON:** LIFT ASSIST



**TECH GEL™**

Proprietary gel that cushions key stress points for extra support

**APPEARS ON:** ALL TRAINING GLOVES & TRAINING WRISTWRAPS



**VENTED PALM**

Vents between key stress points for enhanced breathability

**APPEARS ON:** ALL PRO & PRO WRISTWRAP GLOVES



**BIOFORM**

Clay at palm and fingers that softens and molds as the body warms up for maximum padding, comfort, and control

**APPEARS ON:** LIFT ASSIST



**WASH & DRY**

Machine washable and dryable leather

**APPEARS ON:** WOMEN FLEXFIT / WOMEN PRO /SHIELD PROTECT/ ALL 2.0 RANGE



**TRANSITION STYLE**

Previous best-seller styles kept in range to help rotate to the new 2.0. Previous styles with this icons will be available for one more year before stopping.

# HARBINGER GLOVES

Grip. Support. Protect.





**FINGERLESS GLOVES** – Our full line of “fingerless” gloves with varying degrees of breathability, padding and wrist support

Style	Power	Flexfit	Pro	Training Grip	Pro Wristwrap	Training Grip Wristwrap
Comparison	Entry Level	Minimalist, breathable	More comfort and range of motion	More padded for heavy lifting	Built in Wrist Support	Wrist Support + More padding

2.0



PREVIOUS STYLE



New color



**FULL FINGER GLOVES** – Designed for full finger protection and a complete hand coverage

Style	Men’s Shield Protect Gloves	Women’s Shield Protect Gloves
Comparison	Minimal and Flexible	Minimal and Flexible







# NEW 2.0 - POWER GLOVES

MINIMAL PADDING, REAL BAR FEEL

Entry-level glove, suitable for those looking to add minimal grip support while lifting



## FEATURES:

- Padded genuine leather palm provides firm grip with reinforced high-touch areas
- Comfortable, lightweight and breathable
- Finger and wrist pull tabs for easy on and off
- Updated thumb padding placement in high stress area
- Adjustable fit with hook and loop wrist enclosure



RATING	
Support	////
Padding	////
Breathability	////
Flexibility	////
FITNESS	



### Black

Code	Size
21904	XS
22257	S
22258	M
22259	L
22260	XL

### Green

Code	Size
22261	S
22262	M
22263	L
22264	XL

### Aqua

Code	Size
22235	XS
22236	S
22237	M

### Pink

Code	Size
21934	XS
21935	S
21936	M



## PREVIOUS POWER GLOVES

MINIMAL PADDING, REAL BAR FEEL

The Power Collection is the right choice for those new to strength training or seeking minimal padding for the closest feel of the bar. With an all leather, open cell foam cushioned palm, Powergloves deliver Harbinger's quality and durability at a remarkable value.

### MEN NON-WRISTWRAP

- StretchBack mesh on top of hand
- Double stitched thumb for extra durability
- Fully adjustable wrist closure
- Hand wash / Air dry only



Code	Size
360159	S
360166	M
360173	L
360180	XL



BLACK



BLACK



### WOMEN'S NON-WRISTWRAP

Code	Size
21499	S
21500	M
21511	L

### WOMEN'S NON-WRISTWRAP

- StretchBack mesh for breathability and flexible fit
- Double layered thumb for extra protection
- Padded palm for enhanced comfort and firm grip
- Fully adjustable wrist closure and pull tab

Code	Size
21502	S
21503	M
21504	L



BLACK / BLUE



BLACK / MERLOT



### WOMEN'S NON-WRISTWRAP

Code	Size
21805	S
21806	M
21807	L



# NEW 2.0 - FLEXFIT GLOVES 2.0

FLEXIBLE, BREATHABLE, LAYERED PROTECTION

Natural, minimalist glove for palm protection and uncompromised movement during workouts



**FEATURES:**

- Natural, minimalist glove for palm protection and uncompromised movement during workouts
- Naturally contours to your hand from 7-piece genuine leather palm
- Enhanced breathability with back of hand mesh panel and perforated palm
- Elastic wrist cuff provides more flexibility without compromising stability
- Comfortable and lightweight fabric for unrestricted range of motion
- Designed for easy on and off with integrated finger and wrist pull tabs

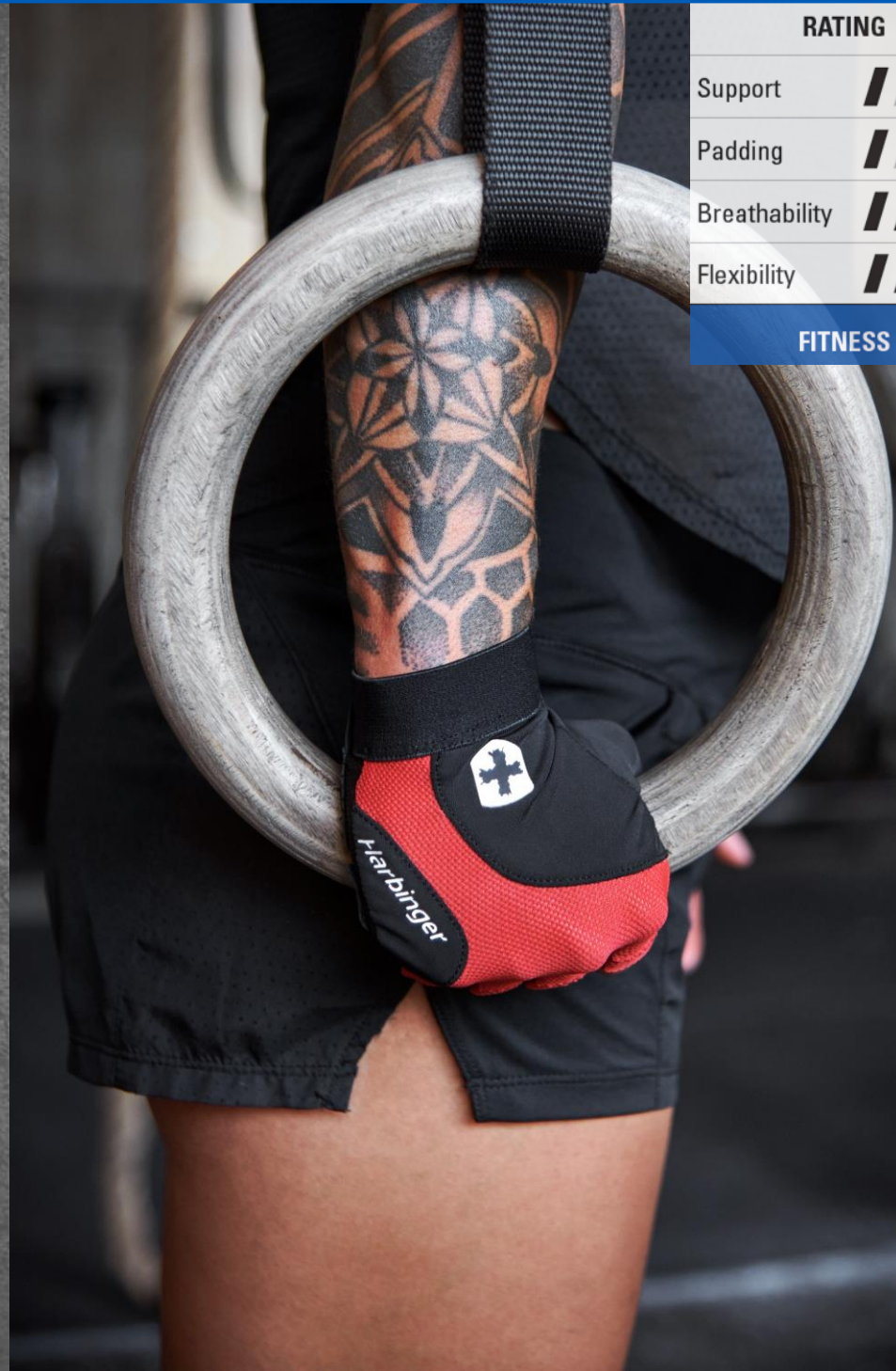


**Red**

Code	Size
22265	S
22266	M
22267	L
22268	XL

**Black**

Code	Size
22435	XS
22436	S
22437	M
22438	L
22439	XL



RATING	
Support	////
Padding	////
Breathability	////
Flexibility	////
FITNESS	



## SHIELD PROTECT GLOVES

The Shield Protect Full-Finger Fitness Gloves provide complete hand coverage with a micro suede palm. The touchscreen friendly fingertips offer convenience during workouts. A close contact grip from an unpadded palm and fingers provides a true feeling while lifting and exercising for more efficient training.



BLACK / GREY



### MEN'S NON-WRISTWRAP



Code	Size
22138	S
22139	M
22140	L
22141	XL

- Full-finger touchscreen friendly fitness gloves with micro suede palm
- Unpadded palm and fingers for a close contact grip with reinforced zones on high touch areas
- Incredibly lightweight design protects hands without the bulk
- 10. Ultra-breathable construction for maximum comfort
- Secure fit with hook and loop wrist enclosure
- Machine washable with anti-microbial treatment to help control odor



GREY / SKY

### WOMEN'S NON-WRISTWRAP



Code	Size
22142	S
22143	M
22144	L





## NEW 2.0 - PRO GLOVES

RUGGED CONSTRUCTION, ESSENTIAL PADDING

Lightweight and flexible gloves with enhanced breathability for moderate lifting support



### FEATURES

- Supports firm grip with a padded genuine leather palm
- Enhanced breathability with perforated 2-piece palm
- Comfortable 4-way stretch fabric on back of hand for full range of motion
- Designed for easy on and off with integrated finger and wrist pull tabs
- Secure fit with adjustable hook and loop wrist fastener



Black



Code	Size
21931	XS
22249	S
22250	M
22251	L
22252	XL



Tan



Code	Size
22253	S
22254	M
22255	L
22256	XL



### RATING

Support	////
Padding	////
Breathability	////
Flexibility	////

### LIFTING



## PREVIOUS PRO GLOVES

RUGGED CONSTRUCTION, ESSENTIAL PADDING

Best selling Pro Collection offers signature Harbinger quality at a competitive price.

### NON-WRISTWRAP

Code	Size
360234	S
360241	M
360258	L
360265	XL

- Hand wash / Air dry only
- New, vented open cell foam cushioned leather palm
- Wrap around thumb protection and double stitched construction



BLACK



BLACK / PINK



BLACK / TEAL  
NEW COLOR



### WOMEN'S

- Top of hand performance vented stretch panels
- Machine wash and dry / separate colors

Code	Size	Code	Size
361491	S	22238	S
361507	M	22239	M
361514	L	22240	L





## NEW 2.0 – TRAINING GRIP

ENHANCED PROTECTION AND PADDED SUPPORT



Heavy lifting glove for those looking for more palm protection

### FEATURES

- Maximum hand protection provided by TechGel padded palm
- Multi-piece palm designed to allow natural hand movement
- Comfortable 4-way stretch fabric on back of hand for full range of motion
- Designed for easy on and off with integrated finger and wrist pull tabs
- Secure fit with hook and loop wrist fastener



### Black

Code	Size
22442	XS
22269	S
22270	M
22271	L
22272	XL

### Blue

Code	Size
22443	XS
22273	S
22274	M
22275	L
22276	XL



### RATING

Support	////
Padding	////
Breathability	////
Flexibility	////

### LIFTING



## PREVIOUS TRAINING GRIP® GLOVES

ENHANCED PROTECTION AND PADDED SUPPORT

Heavy lifting glove for those looking for more palm protection



### NON-WRISTWRAP

Code	Size
360395	S
360401	M
360418	L
360425	XL

- New vented design on the men's glove wicks away moisture and increases breathability
- Hand wash / Air dry only







## NEW 2.0 – PRO WRISTWRAP

Lifting gloves for those who want flexibility and breathability but need maximum wrist stability

### FEATURES

- Integrated wrist wraps for added support and stability during lifts and other movements
- Supports firm grip with a padded genuine leather palm
- Enhanced breathability with perforated 2-piece palm
- Comfortable 4-way stretch fabric on back of hand for full range of motion
- Designed for easy removal with integrated finger pull tabs
- Secure fit with adjustable hook and loop wrist fastener



RATING	
Support	////
Padding	///
Breathability	////
Flexibility	////

**HEAVY LIFTING**



Black

Code	Size
22441	XS
22277	S
22278	M
22279	L
22280	XL



Tan

Code	Size
22287	S
22288	M
22289	L
22290	XL



## PREVIOUS STYLE – WRISTWRAP GLOVES

Strength Training gloves are worn to enhance grip, protect and support the palms. Wristwrap gloves provide essential wrist support, stability and protection, especially during heavy lifts.

### PRO WRISTWRAP

Code	Size
360005	S
360012	M
360029	L
360036	XL

- New graduated poly/cotton blend WristWrap for maximum support, flexibility and comfort
- Hand wash / Air dry only



BLACK / BLUE



KEEP IN RANGE

### TRAINING GRIP WRISTWRAP

Code	Size
360104	S
360111	M
360128	L
360135	XL

- Graduated WristWrap is fully adjustable for maximum support and flexibility
- Hand wash / Air dry only





## NEW 2.0 – TRAINING GRIP WRISTWRAP

Heavy lifting glove for those looking for more palm protection

### FEATURES

- Integrated wrist wrap for added support and stability during lifts and other movements
- Maximum hand protection provided by TechGel padded palm
- Multi-piece palm designed to allow natural hand movement
- Comfortable 4-way stretch fabric on back of hand for full range of motion
- Designed for easy removal with integrated finger pull tabs
- Secure fit with hook and loop wrist fastener



### Black

Code	Size
22444	XS
22291	S
22292	M
22293	L
22294	XL

### Blue

Code	Size
22245	XS
22295	S
22296	M
22297	L
22298	XL



### RATING

Support	////
Padding	////
Breathability	///
Flexibility	///

HEAVY LIFTING



**HARBINGER BELTS**

---

Support. Stability. Power.



**FABRIC BELTS** – Fabric or “hook and loop” belts provide support while still offering flexibility and a quick tension adjustment to relax between sets.

Style	4" Nylon Belt	5" Foam Core Belt	4.5" Foam Core Belt	4.5" Hexcore Belt	7.5" Firmfit Contour Belt
Comparison	Most flex, least support	Versatile, balance of support and flexibility	All the conform of the 5" in an International Weight lighting standard	More supportive + breathable mesh	7.5" back for ultimate support



**LEATHER BELTS** – Leather belts are more supportive but less flexible and are great for heavy lifts

Style	4" Padded Leather Belt	6" Padded Leather Belt
Comparison	4" back for more dynamic movements	6" back : more support, great for squats



**DIP BELTS** – Dip belts add weight to bodyweight movements like pullups or dips.

Style	Polypro Dip Belt
Comparison	Dip & pull up movements





## NYLON BELTS

Harbinger's synthetic strength training belts are made of flexible, lightweight materials for just the right amount of core support. This best-selling lineup features abrasion-resistant nylon for durability and heavy gauge steel tensioning buckles for an adjustable fit.



BLACK

### 4" NYLON

- 4" durable nylon web construction flexes for comfort
- Extra wide 3" strap stabilizes core muscles
- Heavy gauge steel buckle tensions easily for a custom fit

Code	Size
360470	S
360890	M
360906	L
360913	XL





## FOAM CORE BELTS

Foam core belts are designed with a lightweight foam that brings comfort and flexible support while exercising. The wide strap stabilizes core muscles as the heavy gauge steel buckle allows easy custom fit.

### WOMENS 5" FOAM CORE

- 5" width and a flexible, lightweight foam core designed specifically for women.
- Comfortable tricot inner lining.
- Extra wide 3" strap stabilizes muscles.
- Heavy gauge steel buckle tensions easily for a custom fit.



Code	Size
21762	XS
21763	S
21764	M



Code	Size
360494	XS
360951	S
360968	M



BLACK / PINK



MERLOT

While stock last

### MEN 5" FOAM CORE

- Extra wide 5-inch strength training belt with 3-inch support strap provides maximum lower back and abdominal support for heavier lifts
- Ultra-light, flexible foam core weightlifting belt allowing for full range of motion while lifting
- Heavy gauge steel roller buckle makes tensioning simple and easy; plush tricot lining is comfortable against skin
- Durable abrasion resistant fabric flame laminated directly to foam core to prevent fraying and pilling.



Code	Size
21808	S
21809	M
21810	L
21811	XL



Code	Size
21765	S
21766	M
21767	L
21768	XL

BLACK



BLACK / GREEN



GREEN



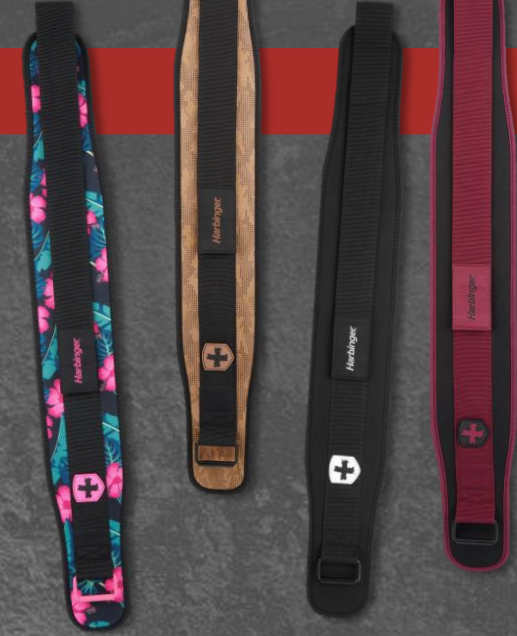


## FOAM CORE BELTS

Foam core belts are designed with a lightweight foam that brings comfort and flexible support while exercising. The wide strap stabilizes core muscles as the heavy gauge steel buckle allows easy custom fit.

### FEATURES

- A versatile, low-profile belt for moderate lifting and functional movements
- The 4.5" Foam Core Belt helps stabilize core muscles and supports lower back during lifting
- 4.5" belt stabilizes core muscles and supports lower back during lifting
- Designed with premium hook and loop fastener for a stronger hold and no snagging
- Low profile steel roller buckle won't interfere with lifts
- Meets IWF competition standards



Merlot

Code	Size
22458	S
22459	M
22460	L
22461	XL



Floral

Code	Size
22466	S
22467	M
22468	L
22469	XL



Black

Code	Size
22241	S
22242	M
22243	L
22244	XL



Tan

Code	Size
22245	S
22246	M
22247	L
22248	XL



Blue

Code	Size
22462	S
22463	M
22464	L
22465	XL



Woodland Camo

Code	Size
22470	S
22471	M
22472	L
22473	XL







## HEXCORE BELTS

Harbinger's synthetic strength training belts are made of flexible, lightweight materials for just the right amount of core support. This best-selling lineup features abrasion-resistant nylon for durability and heavy gauge steel tensioning buckles for an adjustable fit.

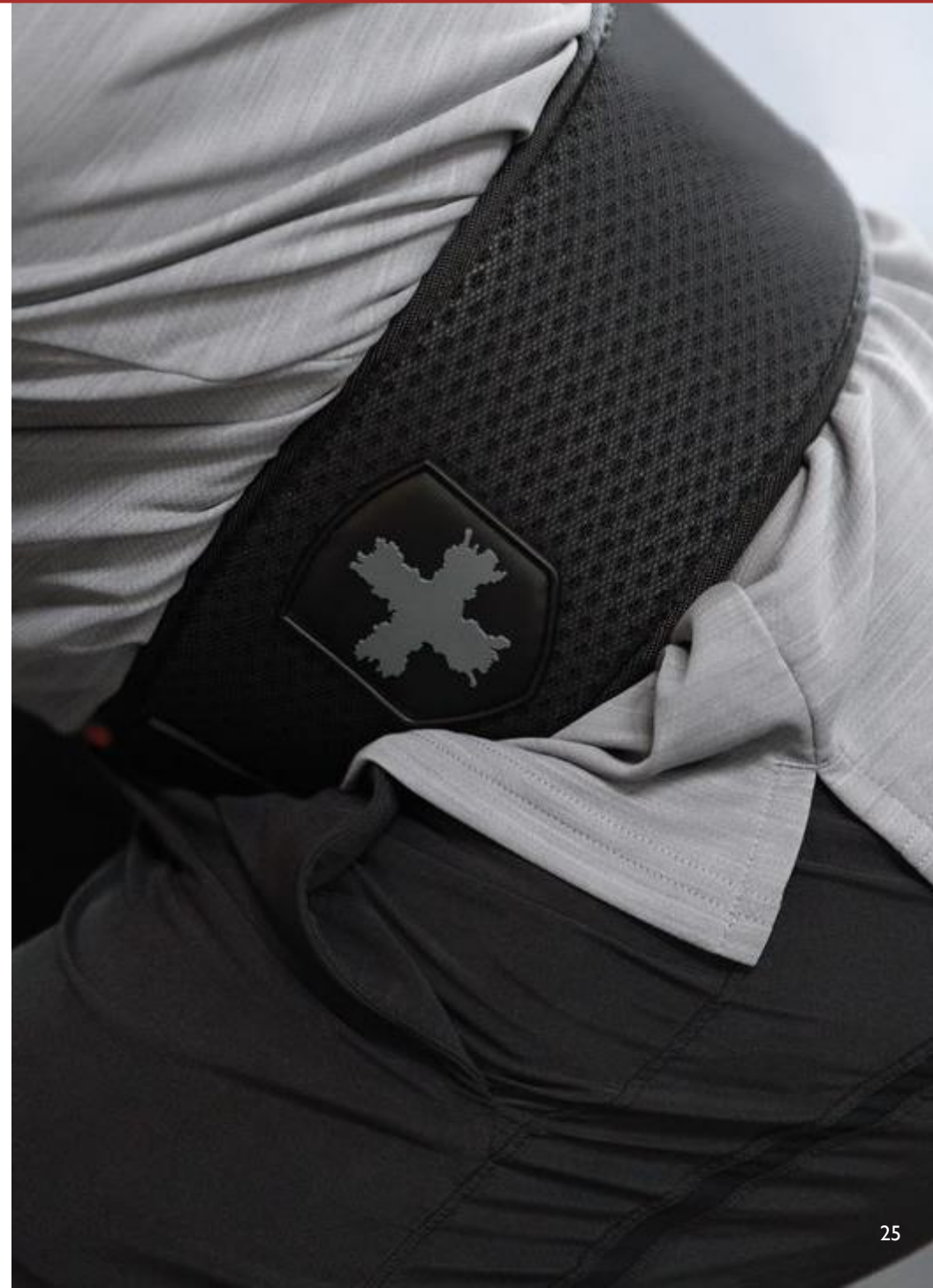
### 4,5" HEXCORE MESH

Code	Size
22153	S
22154	M
22155	L
22156	XL



BLACK /  
RED

- 4.5" foam belt stabilizes core muscles and supports the lower back during lifting.
- Ventilated construction allows for maximum airflow and breathability.
- Designed with premium hook and loop fastener for a stronger hold and no snagging.
- Heavy gauge steel roller buckle makes tensioning easy for a customized fit.
- Belt width meets most competition size requirements.





## CONTOURED BELTS

Contoured strength training belts are ergonomically designed to fit the natural shape of the body while stabilizing the core muscles. Offered in different widths for comfort and support, contoured belts provide a tailored feel. Adjustable, heavy gauge steel tensioning buckles customize the fit.

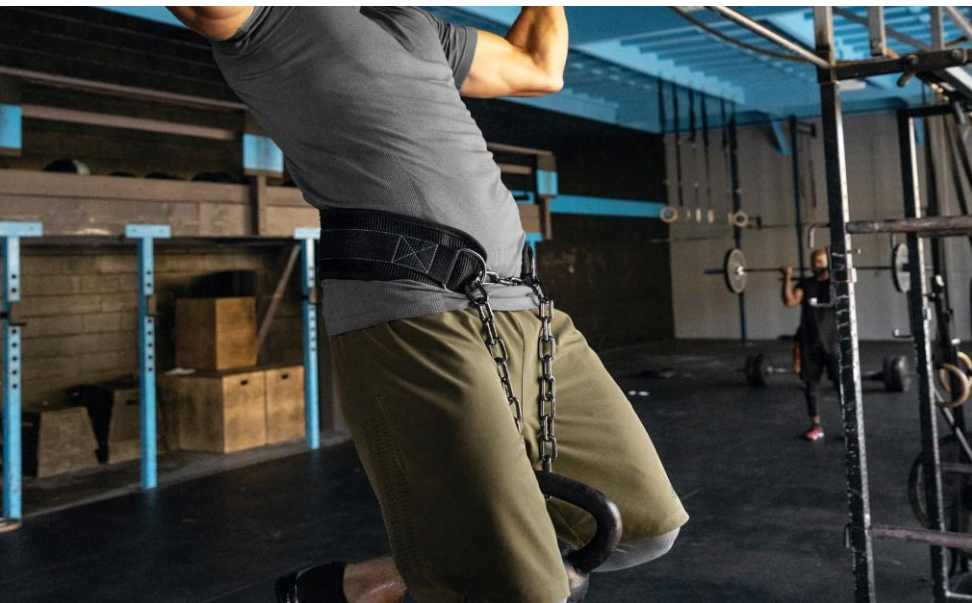


### 7.5" FIRMFIT™ CONTOUR

Code	Size
360500	S
360975	M
360982	L
360999	XL

- 7.5" contoured width for maximum support
- 5 secure foam panels for enhanced protection
- Extra wide 3" strap stabilizes muscles
- Heavy gauge steel buckle tensions easily for a custom fit

BLACK



## DIP BELTS

Harbinger dip belts help add weight for exercises like dips and pullups. They are contoured to fit the natural shape of the body and feature a 34" steel chain and clip to secure additional weight.



BLACK

### POLYPRO DIP BELT

- Constructed of durable polypropylene with heavy duty steel grommets that secure chain to belt
- Contoured belt design rests on back and fits comfortably during serious training
- Features an extended 34" steel chain and carabiner mechanism to easily add weight for chin-ups and dips
- One size fits all

Code	Size
28900 (#US rempalce 21798)	ONE SIZE



## PADDED LEATHER BELTS

Harbinger's Padded Leather belts offer enhanced comfort with interior foam cushioning and a suede lining. Backed with split leather for lasting quality.



BLACK

### 6" PADDED LEATHER BELT

Code	Size
360517	S
361002	M
361019	L
361026	XL

- 6" wide contoured leather for reliable core support
- Interior foam padding and suede lining for comfort
- Heavy duty dual-pronged steel roller buckle locks belt into position



BLACK

### 4" PADDED LEATHER BELT

Code	Size
361057	S
361064	M
361071	L
361088	XL

- 4" wide contoured leather for reliable core support
- Interior foam padding and suede lining for comfort
- Heavy duty dual-pronged steel roller buckle locks belt into position



Harbinger

# HARBINGER LIFT ASSIST

GRIPS ASSISTANCE  
WRIST AND KNEE SUPPORT





## COTTON STRAPS

Cotton lifting straps offer essential grip support while lifting. Designed with extended lengths and merrowed end tabs to prevent fraying.



BLACK

### COTTON LIFTING STRAPS

Code	Size
361170	ONE SIZE

- 20 1/2" full length strap for stronger wrap on bar
- Extra 1 1/2" width increases contact on grip surface
- Merrowed end tabs prevent fraying
- Heavy duty stitching for enhanced durability



BLACK



PINK



CAMO

### PADDED COTTON LIFTING STRAPS

Code	Size
360524	ONE SIZE

- Extended length strap for stronger wrap and grip
- Neotek pad cushions wrist for heavy lifts
- Additional 1.5-inch width increases contact with surfaces and improves grip
- Heavy duty stitching increases durability
- Merrowed end tabs prevent fraying

Code	Size
361231	ONE SIZE

Code	Size
22120	ONE SIZE



MERLOT

Code	Size
16218 (US) 22474 (EU)	ONE SIZE



SKULL

Code	Size
16216 (US)	ONE SIZE



**BIG GRIP LIFTING STRAPS**

Code	Size
361774	ONE SIZE

- Straps have rubber interwoven in heavy duty nylon increasing traction on grip surface
- Merrowed end tabs prevent fraying
- 21 1/2" extended length strap for stronger wrap on bar
- Heavy duty stitching for enhanced durability



BLACK



**BIG GRIP PRO**

The patent-pending Big Grip Strap Collection is made of DuraGrip™ rubber interwoven with nylon for superior traction.

**BIG GRIP PRO LIFTING STRAPS**

Code	Size
360531	ONE SIZE

- Rubber interwoven in heavy duty nylon increases traction on grip surface
- 11 1/2" full length
- NeoTek pads secure the lifting strap in the proper position while providing maximum cushioning during lifting
- Designed for right and left (steel buckle worn on outside of wrist)
- Fully adjustable; one size fits all
- Heavy duty stitching for enhanced durability



BLACK



## LEATHER STRAPS

Specially-tanned real leather provides the closest grip for heavy lifts. Leather straps comfortably conform under the hand and around bar. Tri-layer design and durable construction prevents tearing.

### LEATHER LIFTING STRAPS

Code	Size
361781	ONE SIZE

- Specially tanned real leather offers strong traction on bar with no added bulk
- Tri-layer design maintains shape while heavy duty construction prevents tearing
- Extended 21" length and full 1 1/2" width strap for stronger wrap and grip
- Comfortably conforms under hand and around bar, with no added bulk
- Merrowed end tabs prevent fraying



BLACK



## PADDED LEATHER STRAPS

Specially-tanned real leather provides the closest grip for heavy lifts. Leather straps comfortably conform under the hand and around bar in padded version.

### LEATHER LIFTING STRAPS

Code	Size
20707 (US) 22476 (EU)	ONE SIZE

- Specially tanned real leather offers strong traction on bar with no added bulk
- Tri-layer design maintains shape while heavy duty construction prevents tearing
- Extended 21" length and full 1 1/2" width strap for stronger wrap and grip
- Comfortably conforms under hand and around bar, with no added bulk
- NeoTek pad cushions wrist for heavy lifts
- Merrowed end tabs prevent fraying



RED





## LIFT ASSISTS

Lift assists round out the strength training collection to serve more specific training needs. They provide palm and wrist joint protection and extra assistance when needed. All are fully adjustable and sized for best coverage.



### LIFTING GRIPS

Code	Size
361347	S/M
361354	M/L
361361	L/XL

- SpiderGrip™ leather palm protector with adjustable NeoTek™ cushioned lifting strap
- Bioform™ clay forms to the bar and secures grip
- Sized for best fit, grip coverage, and full finger range of motion width strap



BLACK







**WRIST WRAPS** — Wrist wraps support the wrist by acting as a brace to prevent excessive movement and are particularly useful during pressing exercises.

**KNEE SUPPORT** — Knee sleeves and wraps support the knees while providing compression and padding.

Style	Pro Wristwrap	Red Line Wrist Wrap	Wrist Supports
Comparison	More flex, less support	More support with competition grade elastic	Most support

Style	Power Knee Wraps	Red Line Knee Wraps
Comparison	More flex, less support	More supportive





## PRO LIFTING WRISTWRAPS

Medium weight elastic properly stabilizes the wrist and knee joints while supporting all lifting movements. Extended lengths for essential support and secure wrapping. One size fits all.



### PRO THUMB LOOP WRISTWRAPS

- Extended 20" length
- Thumb loop secures wrap on hand

BLACK



Code	Size
361187	ONE SIZE

## RED LINE WRISTWRAPS

Made of competition grade elastic to maximize wrist and knee joint stability, Harbinger wraps support key movements. Extended lengths for fully adjustable support.

### RED LINE WRISTWRAP

- Distinctive red line competition grade elastic maximizes wrist stability and support
- Extended 18" length for strong support and wrist stability
- Thumb loop secures wrap on hand
- Fully adjustable closure



CAMO



BLACK / RED



GREY CAMO

Code	Size
22121	ONE SIZE

Code	Size
360548	ONE SIZE

Code	Size
22225	ONE SIZE

## WRIST SUPPORTS

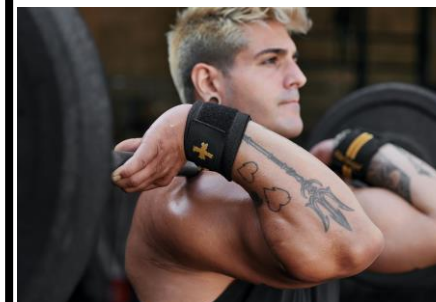
- Non-stretch design stabilizes and supports wrist, while maintaining proper wrist position
- Extra wide 2" stabilizing strap with 6 mm neoprene wrist cuff
- Steel tensioning buckle customizes fit



BLACK



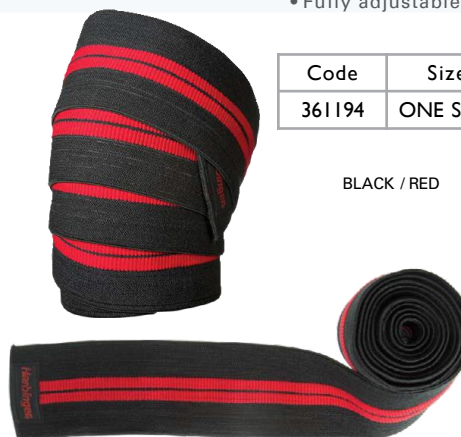
Code	Size
20678	ONE SIZE





### RED LINE KNEE WRAPS

- Distinctive red line competition grade elastic maximizes knee stability and support
- Extended 78" length provides full spectrum tension in wrapping and knee positioning
- 3" wide competition grade elastic provides maximum support
- Helps to preserve and protect the knee joints for bodybuilders, weightlifters, and fitness enthusiasts
- Fully adjustable



Code	Size
361194	ONE SIZE

BLACK / RED



Code	Size
22122	ONE SIZE

CAMO



### Power Knee Wraps

- Medium weight elastic for vital knee support and stability
- Allows for multiple wraps and knee positions
- Full 72" length
- One size fits all

Code	Size
361613	ONE SIZE

BLACK





**HARBINGER TRAINING  
ACCESSORIES**

---

Targeted Additions





## EQUIPMENT ACCESSORIES

Harbinger equipment accessories are compatible with universal cable machines and barbell equipment. Adjustable closures and durable design.



BLACK

### 3" HEAVY DUTY ANKLE CUFF

Code	Size
361040	ONE SIZE

- 3" wide durable design with 2" wide adjustable strap tensions easily and will not stretch
- Synthetic shearling padding for comfort
- Heavy duty steel D ring is compatible with universal cable machines
- One size fits all



BLACK  
While stock last

### NYLON HEAD HARNESS

Code	Size
373200	ONE SIZE

- Heavy duty Cordura nylon construction
- 30" steel chain with clip
- Synthetic shearling pad lining enhances comfort
- Fully adjustable sizing



BLACK

### BAR PAD

Code	Size
361620	14"

- 15mm NeoTek™ foam core cushions neck and shoulders
- Sueded ComfortTech™ cover is smooth and easy to clean
- Fits Standard and Olympic bars



BLACK

### OLYMPIC BAR PAD

Code	Size
361118	16"

- 15mm NeoTek™ foam core cushions neck and shoulders
- Sueded ComfortTech™ cover is smooth and easy to clean
- Fits Standard and Olympic bars

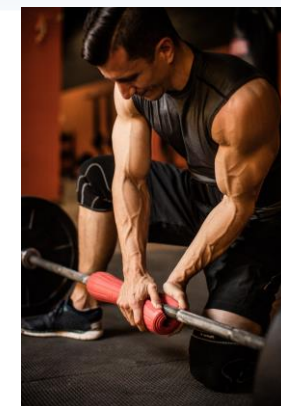


RED

### EGOFT BAR PAD

Code	Size
361385	ONE SIZE

- Contoured design equalizes weight distribution
- Durable high density foam material maintains shape
- 15" length with easy on/off bar construction
- Fits standard and Olympic bars



**HARBINGER**

**HOME FITNESS**





# HOME FITNESS ESSENTIALS

## MULTI GYM PRO

Increases muscle strength in arms, chest, shoulders, abs. No installation necessary. Adjustable depth in order to attach to door frames from 27" to 35" wide.



Item# 21313

### FEATURES & BENEFITS:

- Wide-grip capable.
- Adjustable for exact fit in doorframes up to 83cm wide.
- Sturdy 300lb. Weight capacity.

## PUSH UP PRO

Patented smooth rotation increases muscle activation and maximises results. Increases muscle strength and definition in arms, shoulders, chest, back and abs. Reduces joint strain in wrists and elbow through natural body movement. Supports user weight up to 400lbs. Ball bearing rotation system.



Item# 21314

## AB CARVER PRO

Carve core and help get ripped abs and sculpted arms. Kinetic « engine » uses a carbon steel spring to turbocharge abdominal and arm workouts. Provides resistance rolling out and assistance rolling back. Non-bulky design, easy for travelling. User weight limit 300lbs/136kg.



Item# 21312

**HARBINGER**

**WHILE STOCK LAST PRODUCTS**







## PREVIOUS FLEXFIT GLOVES

FLEXIBLE, LAYERED PROTECTION

Unique BiFlex™ articulated palm design strategically layers premium leather so the FlexFit Collection delivers superior comfort. ½ finger length.

### FLEXFIT MEN'S



- BioFlex pieced palm design strategically layers premium leather to flex naturally with grip
- TechGel pockets in the palm and thumb provide extra support at key stress points
- 1/2 finger length for increased contact with grip surface
- Fully adjustable wrist closure for a secure fit
- Gloves are machine washable and dry with like colors



BLACK / GREEN

Code	Size
21812	S
21813	M
21814	L
21815	XL



### FLEXFIT WOMEN'S



- Vented StretchBack mesh for breathability and flexible fit
- TechGel cushioning pads key stress points for extra protection
- Open back design for lightweight, flexible fit
- Wrap around, fully adjustable wrist closure



BLACK / GREY

Code	Size
21493	S
21494	M
21495	L



BLACK / MERLOT

Code	Size
21496	S
21497	M
21498	L

## PREVIOUS POWER GLOVES GREEN

MINIMAL PADDING, REAL BAR FEEL

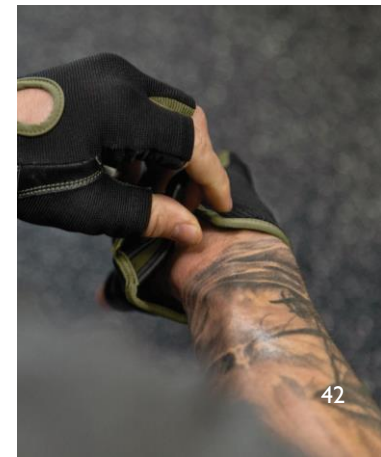
The Power Collection is the right choice for those new to strength training or seeking minimal padding for the closest feel of the bar. With an all leather, open cell foam cushioned palm, Power gloves deliver Harbinger's quality and durability at a remarkable value. ½ finger length.

- StretchBack™ mesh on top of hand
- Double stitched thumb for extra durability
- Fully adjustable wrist closure
- Hand wash / Air dry only



BLACK / GREEN

Code	Size
21822	S
21824	M
21825	L
21825	XL





## PREVIOUS PRO GLOVES BLUE

RUGGED CONSTRUCTION, ESSENTIAL PADDING

Best selling Pro Collection offers signature Harbinger quality at a competitive price. ½ finger length.

### NON-WRISTWRAP

BLACK / BLUE

- Hand wash / Air dry only
- New, vented open cell foam cushioned leather palm
- Wrap around thumb protection and double stitched construction

Code	Size
21817	S
21818	M
21819	L
21820	XL



## PREVIOUS PRO GLOVES BLACK WOMEN'S

BLACK/GREY

Code	Size
21827	S
21828	M
21829	L





### BIG GRIP PADDED LIFTING STRAPS

Code	Size
361767	ONE SIZE

- Neotel wrist pad cushions the wrist during heavy lifting
- Straps have rubber interwoven in heavy duty nylon increasing traction on grip surface
- 21 1/2" extended length strap for stronger wrap on bar
- Heavy duty stitching for enhanced durability



BLACK



BLACK

### LIFTING HOOKS

Harbinger Lifting Hooks were built for the heaviest lifts and feature an exclusive adjustable hook positioning system based on hand size and fully-adjustable nonrestrictive closure. Extra-wide heavy-duty hooks holds the weight when your hand grip fails, while the neoprene cuff cushions your wrist for comfort and protection.

#### LIFTING HOOKS

Code	Size
361378	ONE SIZE

- "No drop grip" heavy duty hooks hold weights when hand grip fails
- Adjustable hook positioning based on hand size
- Extra wide hook works on most bars
- Premium hook coating increases grab on bar
- Neoprene cuff cushions wrist for enhanced comfort when lifting
- Fully adjustable nonrestrictive closure



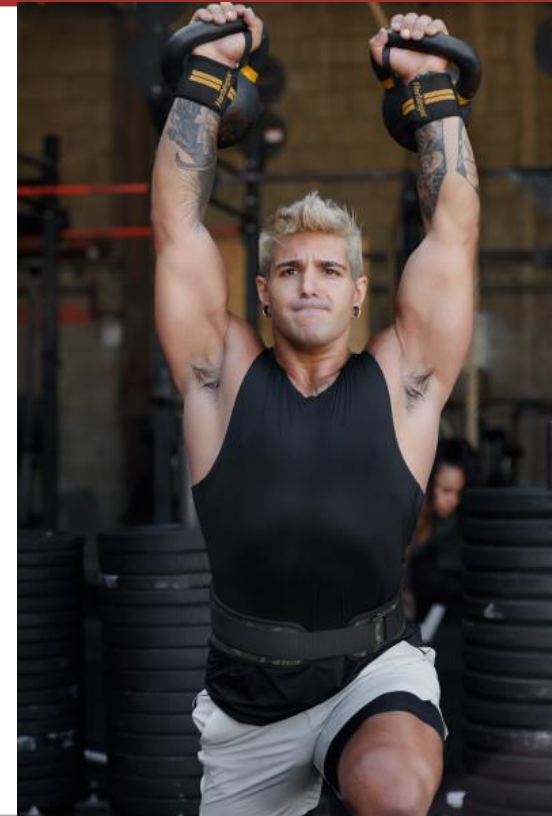
RED LINE WRISTWRAP

- Distinctive red line competition grade elastic maximizes wrist stability and support
- Extended 18" length for strong support and wrist stability
- Thumb loop secures wrap on hand
- Fully adjustable closure



GOLD

Code	Size
22226	ONE SIZE

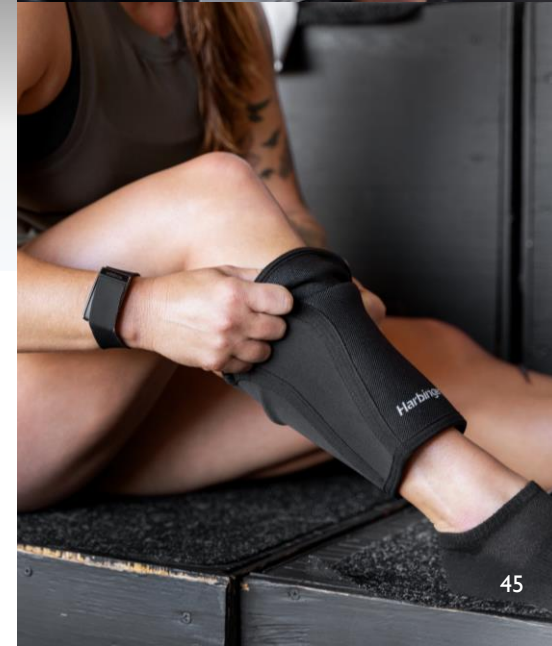


5MM KNEE SLEEVE

- 5mm knee sleeves provide protection and joint support during heavy lifting and contact movements.
- 5mm knee sleeves provide protection and joint support
- Cushions the knee during lunges and other contact movements
- Adds lower quad compression for performance and recovery benefits
- Keeps the knee joint warm between exercises for optimal performance
- Snug but comfortable fit stays in place during workouts

BLACK

Code	Size
22283	S
22284	M
22285	L
22286	XL





## BELTS

Herbinger's synthetic strength training belts are made of flexible, lightweight materials for just the right amount of core support. This best-selling lineup features abrasion-resistant nylon for durability and heavy gauge steel tensoning buckles for an adjustable fit.



### 4" NYLON

Code	Size
22174	XS
22175	S
22176	M

- 4" wide belt with 3" support strap
- Flexible nylon web core



MERLOT



### 4,5" HEXCORE MESH

Code	Size
22164	XS
22165	S
22166	M



BLACK / BLUE

- breathable support : HexCore material and ventilated backing provide maximim airflow with firm support
- Easy tensoning : heavy gauge steel roller buckle makes tensoning easy for a customized fit
- Competition size : 4,5inche width meets most competition size requirements





## GRIP STRENGTHENING

Made of competition grade elastic to maximize wrist and knee joint stability, Harbinger wraps support key movements. Extended lengths for fully adjustable support.

### POWER HAND GRIP

Code	Size
361392	ONE SIZE

- Engineered resistance mechanism for consistent tension and durability
- Ergonomic design keeps hand in proper position
- Dual-colored non-slip grip

BLACK / BLUE



### TRICEP ROPE 26"

Code	Size
361415	26"

- Premium nylon woven ropes
- Custom engineered over-molded grips
- Die cast aluminum receivers attach to universal cables



BLACK / RED

## MATS

Harbinger mats are cushioned with a non-slip ribbed surface for optimal training and recovery.

### ANTIMICROBIAL DURAFOAM MAT 3/8"



Code	Size
361675	72"x 23"

- Antimicrobial treated
- Closed cell Durafoam™ moisture resistant surface
- Integrated strap for transport



BLACK

### ANTIMICROBIAL DURAFOAM MAT 5/8"

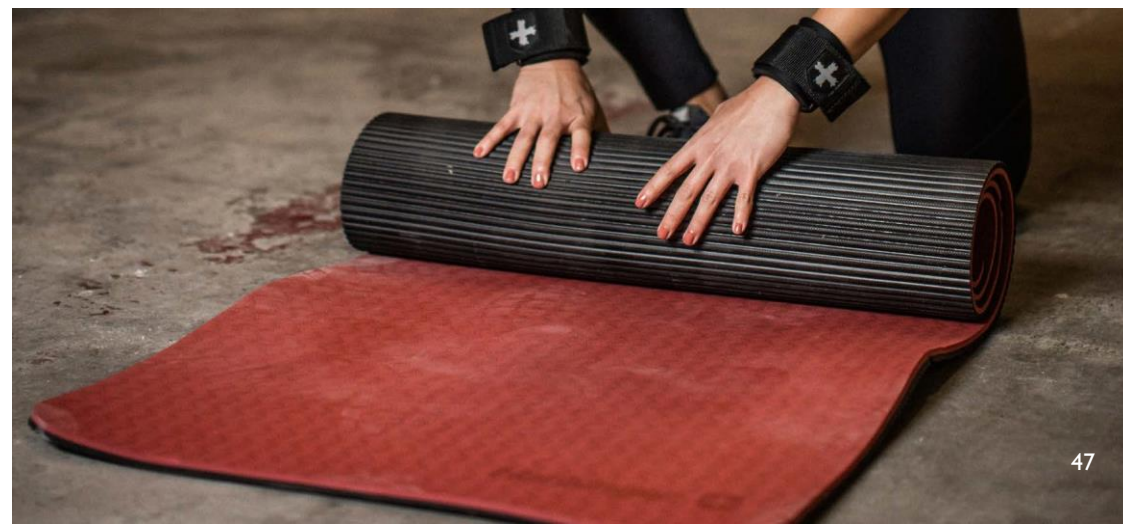


Code	Size
361408	72"x 23"

- Antimicrobial treated
- Closed cell Durafoam™ moisture resistant surface
- Integrated strap for transport

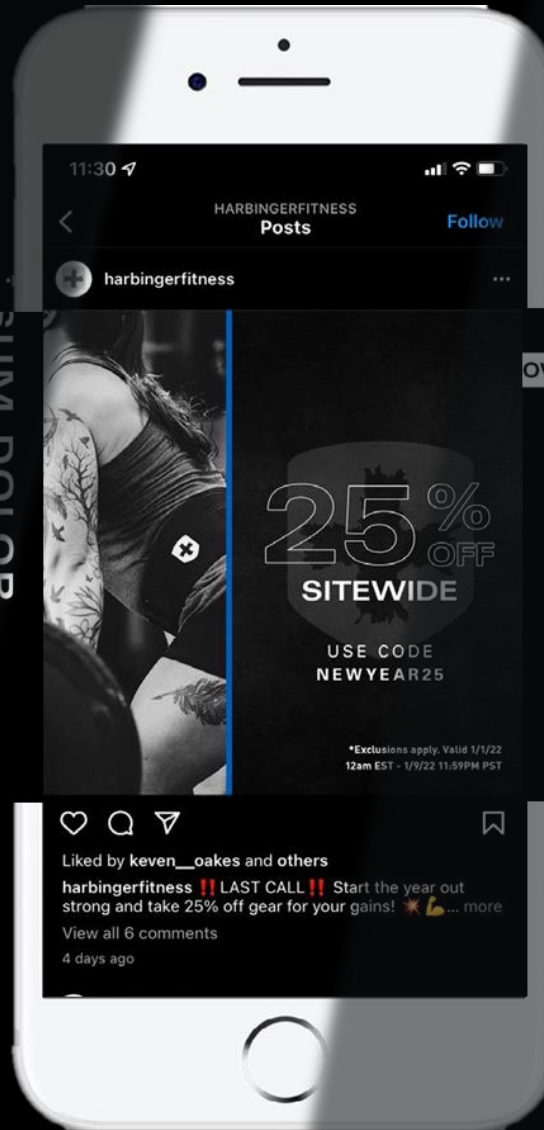


BLUE



# HARBINGER BRAND SUPPORT

Campaigns. Digital. Retail. Social.





APRIL-MAY



Summer Shred

**Objective**

Get in shape for the season

**Product**

Padded Cotton Lifting Straps, Pro WW Gloves, Padded Leather Belt, Foam Core Belt, Power Glove, Red Line Wrist Wraps, Red Line Knee Wraps, Pro Glove, Big Grip Pro Straps,

JULY



Home Ex Summer

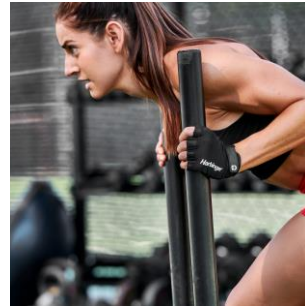
**Objective**

Workout on the go or at home

**Product**

Home fitness

AUGUST



FA23 Launch

**Objective**

New Fall 23 products

**Product**

FA23

OCT-DECEMBER



Holiday

**Objective**

Gifts for the lifter in your life

**Product**

Padded Cotton Lifting Straps, Pro WW Gloves, Padded Leather Belt, Foam Core Belt, Red Line Wrist Wraps, Red Line Knee Wraps, Pro Glove, Big Grip Pro Straps, PP Dip Belt, Lifting Grips

JANUARY



New Year, New You

**Objective**

New year, new you

**Product**

Power Glove, Foam Core Belt, Red Line Wrist Wraps, Padded Cotton Lifting Straps, Flexfit Gloves Knee Sleeves, Power Grip





### SUPPORT

A variety of medias and asset to best promote product locally.

#### Close up Visual



#### Lifestyle Pictures



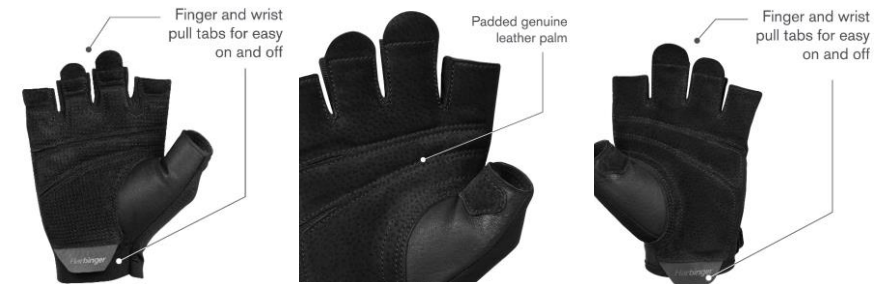
#### Features bullets e-com



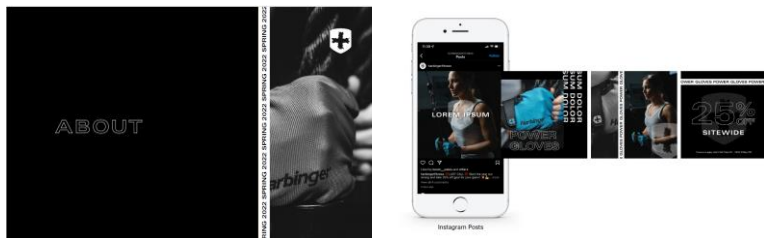
Multi-piece palm designed to allow natural hand movement

Designed for easy on and off with integrated finger and wrist pull tabs

#### Technical highlights



#### Visual center & Marketing Campaign for local creations

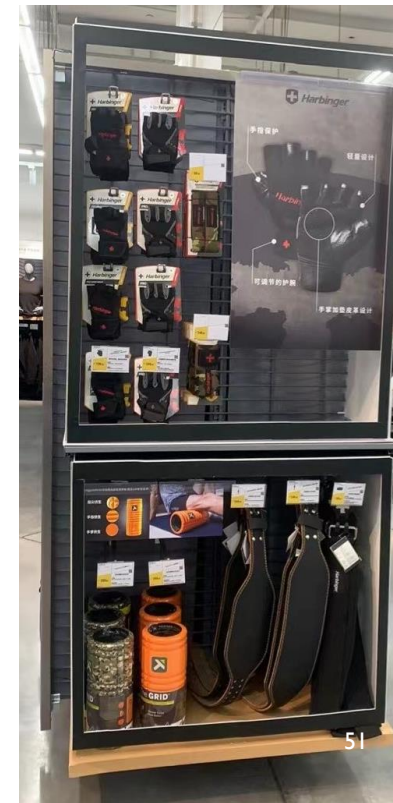
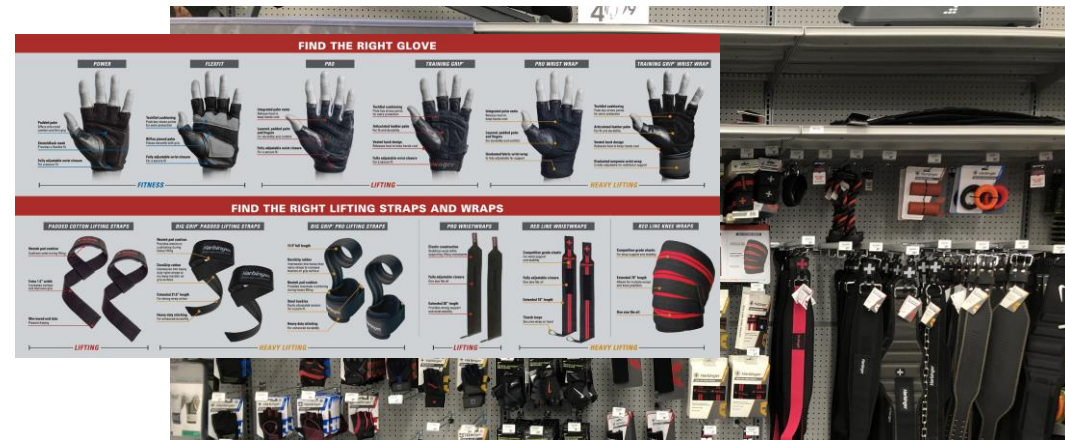
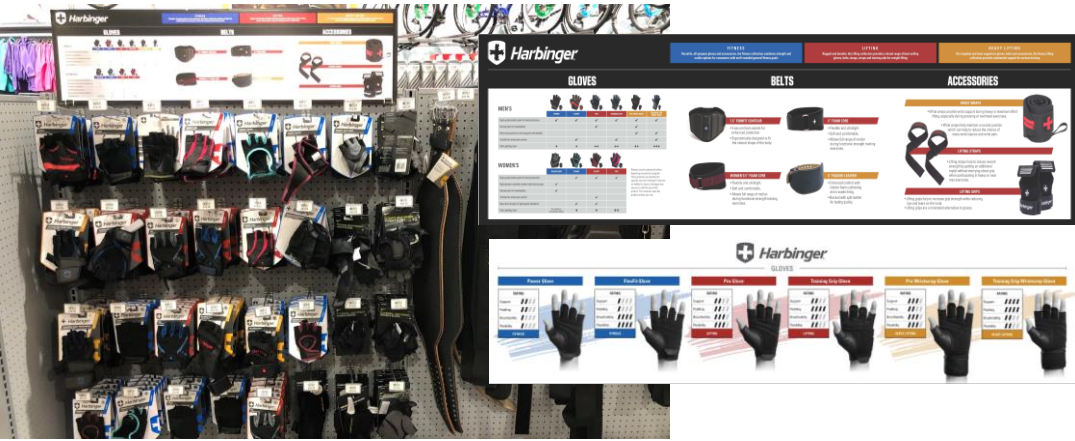


#### More than 20 new videos





VISUAL MERCHANDISING



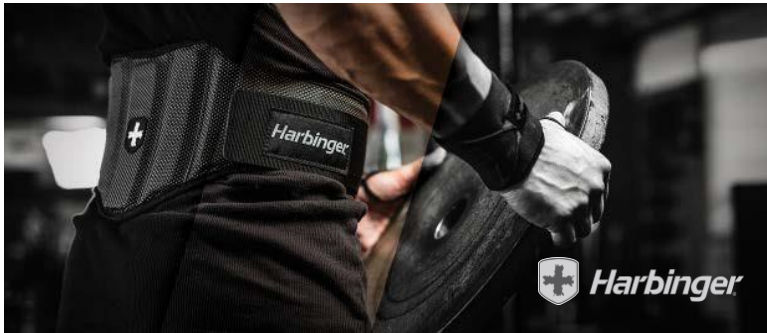
# RETAIL LOOKS

## VISUAL MERCHANDISING

A variety of retail signage is available.



Header Card



H-Rack Sign



Harbinger



GLOVES  
BELTS  
STRENGTH ACCESSORIES

HarbingerFitness.com

Blade Sign

Glove Sizer Tablet

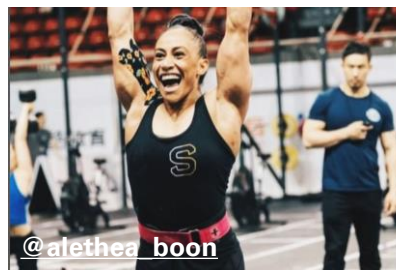
# ALL EYES ON HARBINGER



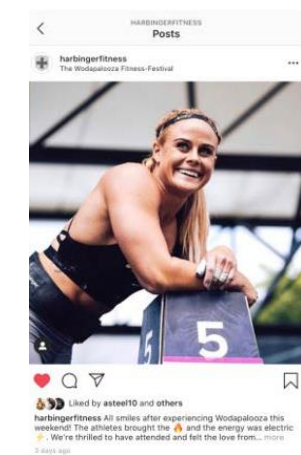
Will Smith  
@vsgalang



harbingerfitness 7w  
38,063 likes  
harbingerfitness A very special #FlexFriday screenshot from @muscle\_and\_fitness -- Dwayne @therock Johnson ROCKING our wrist wraps!!



@alethea boon



Juan Pablos Santos Venezuela 52



**Harbinger**<sup>®</sup>  
ELEVATING STRENGTH

Výhradní zastoupení pro Českou republiku

**FIT PLUS International, s.r.o.**

Bašty 2, 602 00 Brno

eshop: [eshop@fitplus.cz](mailto:eshop@fitplus.cz)

velkoobchod: [velkoobchod@fitplus.cz](mailto:velkoobchod@fitplus.cz)

[www.fitplus.cz](http://www.fitplus.cz)

Výhradné zastúpenie pre Slovensko

**FIT PLUS Group, s.r.o.**

Elektrárenská 1, 831 04 Bratislava

eshop: [eshop@fitplus.cz](mailto:eshop@fitplus.cz)

velkoobchod: [velkoobchod@fitplus.cz](mailto:velkoobchod@fitplus.cz)

[www.fitplus.sk](http://www.fitplus.sk)

**FITPLUS**<sup>®</sup>

We represent the most trusted brands in the world of fitness

©2023 Implus Footcare, LLC • SKLZ<sup>®</sup> is a registered trademark of Implus Footcare, LLC

All content and intellectual property are owned by Implus.

FIT PLUS<sup>®</sup> is a registered trademark of FIT PLUS Group s.r.o.